

\$6,450,000 - 4950 Lake Ridge Rd, Pickering

MLS® #E5197312

\$6,450,000

6 Bedroom, 4.00 Bathroom, 2,000 sqft
Residential on 50.00 Acres

Rural Pickering, Pickering, Ontario

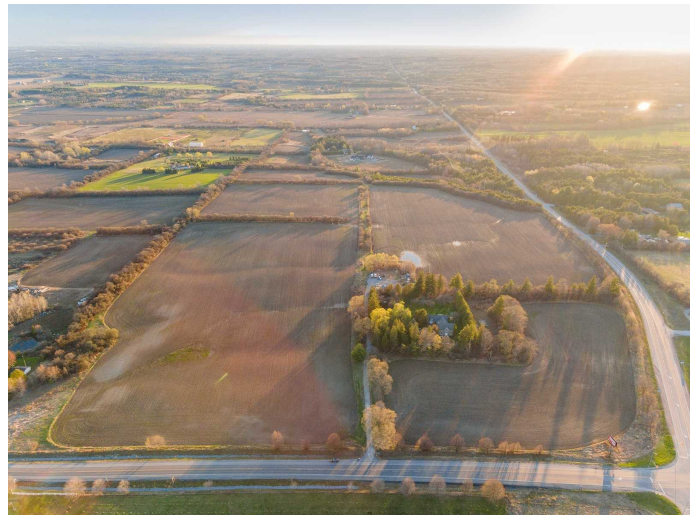
87.6 Acres W/ Beautiful Original Stone Mansion Surrounded By Mature Trees & Massive Fields In Fantastic Location. Easy Access From Toronto Via Hwy 401&407 W/ Exits Onto Lake Ridge Rd. Close To Golf Courses, Forests, Hiking, Skiing & Other Recreational Activities. Restore This Gem To Its Original Estate Glory, Convert To Country Retreat, B & B Or Organic Farm. Continues To Generate Income From House, Farm & Billboard. Property Has Future Development Potential

Essential Information

MLS® #	E5197312
Price	\$6,450,000
Bedrooms	6
Bathrooms	4.00
Square Footage	2000-2500
Acres	50-99.99
Type	Residential
Sub-Type	Farm
Style	2-Storey
Status	A

Community Information

Address	4950 Lake Ridge Rd
Area	Durham
Subdivision	Rural Pickering
City	Pickering



Province Ontario
Postal Code L1Y 0A6

Amenities

Features House, Farm And Billboard Currently Generating Revenue Inquire For More Information.
Parking Spaces 20
of Garages 1
Garages Attached
Waterfront None
Pool None
of Kitchens 2

Interior

Heating Forced Air
Cooling None
Fireplace Yes
Basement Part Bsmt

Exterior

Exterior Stone
Lot Description 1070.00x2427.00 Feet

Additional Information

Zoning Zoning Review Underway
Taxes 7781.93
Fronting On (NSEW)W
Driveway Private
Approximate Age (Years) 100+
Directions/Intersection Lakeridge Rd & Concession Rd 9
Days On Website 405

Listing Details

Listing Office SOTHEBY`S INTERNATIONAL REALTY CANADA

This website may only be used by consumers that have a bona fide interest in the purchase, sale, or lease of real estate of the type being offered via the website. The data is deemed reliable but is not guaranteed accurate by TREB.